



INDUSTRIAL
TRANSFER &
STORAGE INC.

RIGGING • MILLWRIGHT • FABRICATION • PLANT RELOCATIONS • PROJECT MANAGEMENT • STORAGE

How Much We've Grown In 40 Years



Since 1984 **Industrial Transfer and Storage** has been moving, handling, and installing heavy equipment and machinery. **ITS** is a full service industrial contractor providing all services required to set up and maintain your entire plant or just one piece of production equipment to keep your operations running strong with minimal down time.

Our millwright experience spans many industries including Aerospace, Chemical, Electrical, Medical, Food Processing, Oil & Gas. Using state of the art methods and a proactive safety program, **ITS** can safely install, level and align all types of production machinery.

Our management team has extensive experience in manufacturing, facilities engineering, project management, and related construction. This gives **ITS** a true understanding of the complexities associated with specialized industrial equipment installation and relocation projects.

As a global Industrial Contractor, **ITS** has successfully completed projects all over North America as well as international projects involving services to/from Canada, Mexico, Europe, Puerto Rico, Asia, Denmark, and Australia.

Additionally, our structural fabrication and design services meet high industry standards, including ASME, ASTM and AWS (American Welding Society). Our fabrication and welding shop is well equipped with the most modern equipment including a 10' x 12' CNC/Oxy Fuel Cutting System Plasma Table.

ITS is a Full Service Contractor providing a full range of industrial trades and services including:

- Project Management
- Rigging
- Millwright
- Laser Alignment
- Trucking
- Storage
- Custom Fabrication
- Welding
- Layout & Design (CAD)
- Custom Crating
- Dismantling & Install
- Building Modifications
- Demolition
- Mechanical
- Electrical
- Consulting
- Transportation

Certifications & Licenses

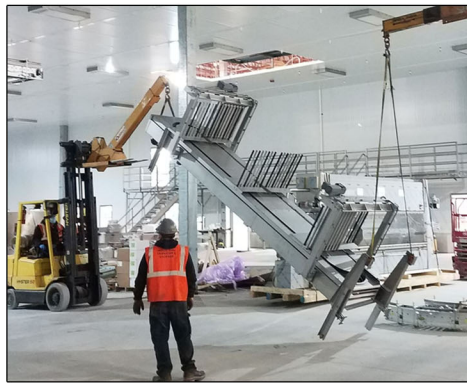
MA, RI, & CT Hoisting Licenses
OSHA 10 Certification
NASP Certified Safety Manager
ISNET Certified
CAGE 5V451

For a quote or to speak to an estimator
508-765-9178
or email info@industrialtransfer.com

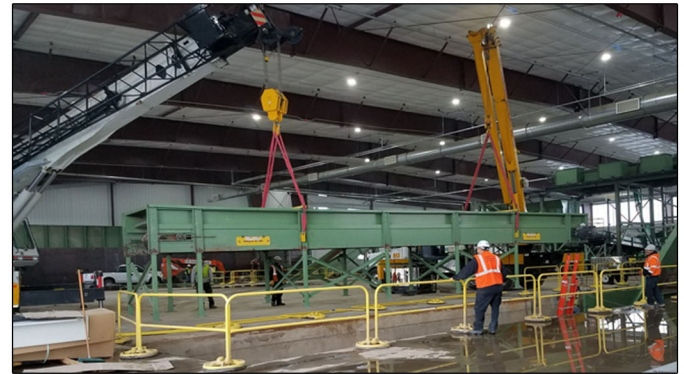
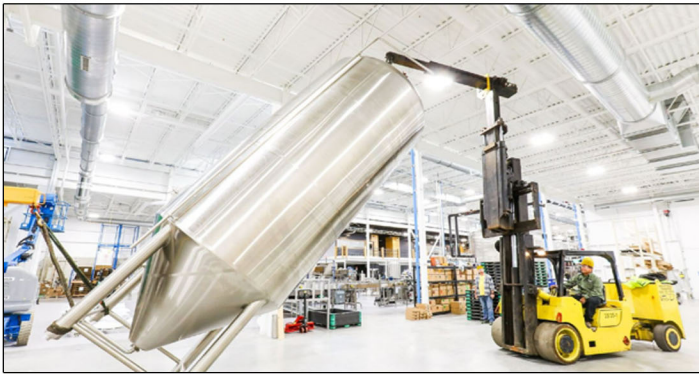


ITS services all types of industries and relocated hundreds of manufacturers in the U.S. and abroad.

Recycling • Manufacturing • Plastics • Food & Beverage • Converting • Aerospace
Metal • Military • Fiber Optics • Electronics • Wire & Cable • Robotics



ITS is more diversified to handle the most strategic projects with our Versa-Lifts. Our 60/80 lift with boom has a lifting capacity of 100,000lbs. The 40/60 has a 60,000lb lifting capacity with a boom that reaches a height of 26ft. and our 25/35 can lift 35,000lbs and is equipped with a three section boom that reaches 23ft.



ITS is committed to safety and is constantly improving the company's fully compliant safety programs to ensure its policies meet or exceed those set forth by our customers. Our safety programs also adhere to State and Federally regulated requirements.



Your Once In A Lifetime Move Is What We Do Everyday



Our mission is to exceed customer expectations by fostering loyal business relationships through quality services, and by providing a safe, stable and rewarding environment for our employees.

After the first few line moves, it became apparent that ITS was the right choice for our rigging needs. Estimates on cost, disassembly/reassembly times, number of pallets, and the time and number of trailers needed were all on target.

*~Robert Hughes, Jr, Facilities Manager, Stoneridge, Inc
Plant Relocation from CT to Juarez, MX*

Your team is extremely professional and competent. This move was undertaken under very difficult circumstances. With the Covid pandemic having delayed our construction process, we were coming up against locked down timing to vacate our old facility. Your team never blinked at the challenge! ITS was able to execute a phased move in while construction was being carried out and finish ahead of schedule!

*~Charles Giampietro, Project Manager, MW LifeSciences
Plant Relocation*

ITS went above and beyond (as usual). We had a very technical lift for a repair to a critical machine. The ITS team operated like a well oiled machine. The job was done safely, quickly and with accuracy unmatched! Even the vendor who rebuilt the gearbox and motor commented that this was the best rigging team he has worked with in the country. Evolutions like this is why I only call on ITS for our rigging needs!

*~Brandon Colon, Supervisor, General Dynamics Electric Boat
Lifting a large gearbox and motor up & over the machine*

I'd like to take a minute of your time to thank the ITS crew who we contracted with one of our largest and most successful projects to date. From the estimating stage to the final clean-up, their prompt attention to our project needs and professionalism really made my job as PM easier and the whole project that much more successful.

*~Jason Truscott, Mfg Engineering Mgr, AIS
Multiple machine installs*

Some Of The Great Companies We've Worked With:

Saint Gobain Abrasives ▪ Collins Aerospace ▪ Toray Plastics ▪ Anheuser Busch ▪ Eastman Chemical
Honeywell Safety Products ▪ Callaway Golf ▪ General Dynamics Electric Boat ▪ Karl Storz ▪ Vibram
Pratt & Whitney ▪ Doosan ▪ Waste Management ▪ Treehouse Brewing Company ▪ Tegra Medical
A/Z Corp ▪ Infinity Meats ▪ Acushnet ▪ Serta Simmonds ▪ Rand Whitney ▪ Proctor & Gamble ▪ Incom
Asahi ▪ 3M ▪ Daniele Foods ▪ Lenze America ▪ Flexcon ▪ Pfizer ▪ Tyco Valves ▪ Berkshire Grey ▪ AIS
Wyman Gordon ▪ Seaman Paper ▪ Sanofi Genzyme ▪ Okonite ▪ EMCOR ▪ NN Inc ▪ Glencore ▪ Casella
Sikorsky Aircraft ▪ Teknor Apex ▪ Clariant ▪ Home Market Foods ▪ Eaton Wrightline ▪ CP Group ▪ Schott
Trelleborg ▪ Viant Medical ▪ Dexter Russell ▪ ArgoTec ▪ Raytheon ▪ Skanska ▪ Covestro ▪ IPG Photonics
Cartamundi ▪ Mauser ▪ Rogers Corp ▪ US Tsubaki ▪ United Lens ▪ Great Good Brewery ▪ Yamazen USA

Corporate Office

529 Ashland Ave
PO Box 800
Southbridge, MA 01550

Warehouse

7 West Dudley Rd
Dudley, MA 01571

Rhode Island Office

342 Compass Circle #B4
Quonset Park
N. Kingstown, RI 02852

508-765-9178 ▪ www.industrialtransfer.com